

ELTONS

Estate Agents

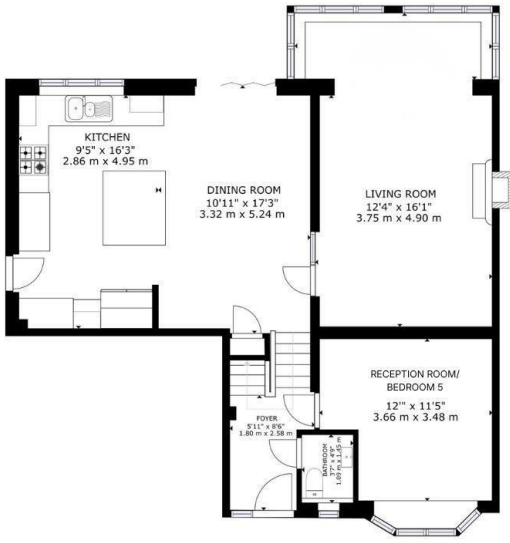


24 DICKINS WAY
HORSHAM

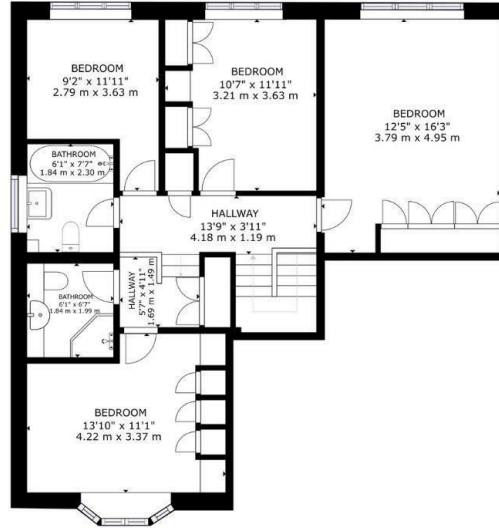
£780,000
FREEHOLD

Set on the highly sought after Dickins Way in Horsham, this beautiful property features four double bedrooms, two reception rooms, two bathrooms, stunning open plan kitchen/dining room, a large south facing garden with breathtaking views and no onward chain.





FLOOR 1



FLOOR 2



GROSS INTERNAL AREA
 FLOOR 1: 868 sq ft, 80.67 m²; FLOOR 2: 852 sq ft, 79.17 m²
TOTAL: 1720 sq ft, 159.84 m²
SIZES AND DIMENSIONS ARE APPROXIMATE, ACTUAL MAY VARY.



Energy Efficiency Rating		
	Current	Potential
Very energy efficient - lower running costs		
(92 plus) A		
(81-91) B		
(69-80) C		
(55-68) D		
(39-54) E		
(21-38) F		
(1-20) G		
Not energy efficient - higher running costs		
England & Wales	EU Directive 2002/91/EC	

Agents Note: Whilst every care has been taken to prepare these particulars, they are for guidance purposes only. All measurements are approximate and are for general guidance purposes only and whilst every care has been taken to ensure their accuracy, they should not be relied upon and potential buyers/tenants are advised to recheck the measurements

Eltons Estate Agents Horsham 01403 299 771
 13 - 15 Queen Street sales@eltons.co.uk
 Horsham eltons.co.uk
 West Sussex
 RH13 5AA

ELTONS
 Estate Agents